

BCH

MECHANICAL, INC.

PROJECTS

IN

PROGRESS

BCH

MECHANICAL, INC.

ST. JOSEPH'S NORTH HOSPITAL

PROJECT DESCRIPTION

BayCare, the largest health system in the Tampa Bay area, is among a number of providers nationally that have taken advantage of positive industry trends to borrow money through bond issues to raise funds for the new St. Joseph's Hospital North.

Construction of the three-story, 350,000-square-foot hospital in North Tampa off Van Dyke Road, is planned to open in 2009. This acute care hospital will feature 108 all-private rooms, a full service 30-bed emergency department, and a technologically advanced all-digital paperless environment.

The BCH Mechanical team is responsible for the full Mechanical: HVAC, Plumbing, Sheet metal and Medical Gas systems for the entire facility working with Bovis Construction. This is a \$ 30-million mechanical project for BCH Mechanical with over 700,000 pounds of ductwork and complete chilled water, condenser water, and steam, and heating water systems. This project strengthens our reputation as being the "go to" contractor on all of the significant health care projects in the bay area.

Bovis received the Jerry Edwards Award for Americas Job of the Year for this project. They beat out 400 projects in North America and finished Top 5 Globally.

Project Team

General Contractor
Bovis Lend Lease

Owner
St. Joseph Healthcare Inc.

Mechanical Contractor
BCH Mechanical, Inc.

Mechanical Construction Cost:
\$31,000,000

Completion Date: September
2009



BCH

MECHANICAL, INC.

AQUALEA RESORT HOTEL

PROJECT DESCRIPTION

Aqualea will be Clearwater Beach's newest and most luxurious 17-story resort hotel condo. This new Resort will be the centerpiece of a new ½ mile expanse of beach. It is managed by Hyatt Resorts, a global leader in vacation home management.

All 250 units will have a view of either the Beach or the Gulf. There will be studios, one-bedroom and 2-bedroom units ranging from 522 SF to 2,000 SF. These units will be delivered fully furnished and decorated by a professional interior designer.

BCH Mechanical is installing a condenser water system with stackable heat pumps and cooling towers on the roof, and a fully integrated control system. The plumbing system will employ a sovent system, full roof drainage, and a high end fixture package to meet the 4-Star Hyatt standards. This is a \$12.5 Million dollar mechanical project and will be completed in late 2009.

Project Team

General Contractor

Bovis Lend Lease

Owner

NJR Development Company, LLC

Mechanical Contractor

BCH Mechanical, Inc.

Mechanical Construction Cost:

\$ 12,837,100

Completion Date: December 2009



BCH

MECHANICAL, INC.

POLK SOUTH COUNTY JAIL EXPANSION

PROJECT DESCRIPTION

This is the third phase of the South County Jail project in Polk County. It is part of the master plan at the complex for a \$110 Million dollar upgrade, and expansion to the jail. The project includes new dormitory spaces, kitchen, infirmary, video visitation, and staff dining facilities. It also includes six (6) new buildings and the infrastructure connection to the new chilled, and hot water systems. A complete 4-pipe chilled water systems will provide a considerably more efficient system than the original units in place. The project will have "state of the art" Dais Analytical outside air systems with a comprehensive Andover building management system in place to operate, and monitor the systems. All the buildings are connected to the central plant that was put in place during the first phase of the project and serves the entire campus.



Project Team

General Contractor

Peter Brown Construction Co.

Owner

Polk County Board of County
Commissioners

Mechanical Contractor

BCH Mechanical, Inc.

Mechanical Construction Cost: \$ 6,600,000

Completion Date: January 2010

BCH

MECHANICAL, INC.

ORLANDO EVENTS CENTER

PROJECT DESCRIPTION

The Orlando Event Center is a new 780,000 SF seven level arena facility. The center will serve as home to the National Basketball Association's Orlando Magic. The team is developing the 18,500-seat NBA arena, and the city will operate it and rent it for concerts, exhibitions and other events once it opens in the third quarter of 2010. Hunt Construction Group is the construction manager for this 8.75 acre project in downtown Orlando.

BCH was selected to do the plumbing system. The Plumbing includes sanitary waste and vent piping, primary/secondary storm piping, domestic water and natural gas piping, all fixtures, drains, equipment, and plumbing specialties, including 3 Hydroworx tubs.

Project Team

General Contractor

Hunt Construction Group

Owner

City of Orlando

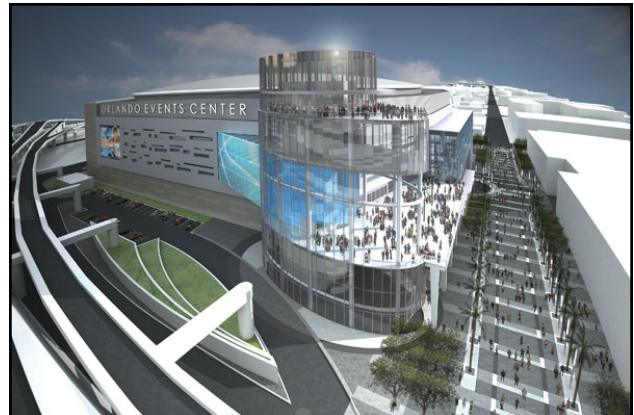
Plumbing Contractor :

BCH Mechanical, Inc.

Mechanical Construction Cost:

\$ 8,500,000

Completion Date: November 2010



BCH

MECHANICAL, INC.

MOSAIC FLORIDA OPERATIONS CENTER

PROJECT DESCRIPTION

This is a new \$20,000,000 state headquarters for mining giant The Mosaic Company. The new site is 7.4 acres in the Fishhawk Ranch area of eastern Hillsborough County. Mosaic will use this four story headquarters as a base for over 440 administrative-level employees, converging a number of smaller offices throughout the state.

Like many new commercial buildings, Ryan Companies, Inc. will incorporate a number of sustainable building features to apply for a Gold Certification from the US Green Building Council's Leadership in Energy and Environmental Design or LEED Program.

The mechanical systems consist of four high efficiency roof mounted air conditioning units serving over ninety variable air volume boxes. Four energy recovery units will be utilized for building exhaust and pretreatment of the outside air, which will help the building's energy efficiency. The building management system will monitor the heating and air conditioning systems, the lighting controls system, and power monitoring for measurement and verification. Power monitoring will allow the owner to monitor "chunks" of the building's electrical use.

Plumbing systems include low flush toilet and urinal systems with sensor flush valves. Lavatories have sensors with hydroelectric generators eliminating the need for battery replacements.

Project Team

General Contractor

Ryan Companies, Inc.

Owner

The Mosaic Company

Mechanical Contractor :

BCH Mechanical, Inc.

Mechanical Construction Cost:

\$ 1,455,385

Completion Date: Spring 2010

