

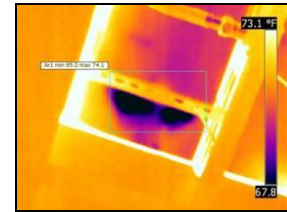
WHAT POTENTIAL PROBLEMS ARE HIDING IN YOUR FACILITY?



Our new "Flir" Thermography camera is the latest high tech purchase by **BCH Mechanical, Inc.** and **ConServ Building Services** intended to separate our service offerings from others. The capabilities are endless - from searching for building moisture intrusion, finding leaks in piping systems and scanning electric panels for potential outages and costly repairs before they happen. ☐

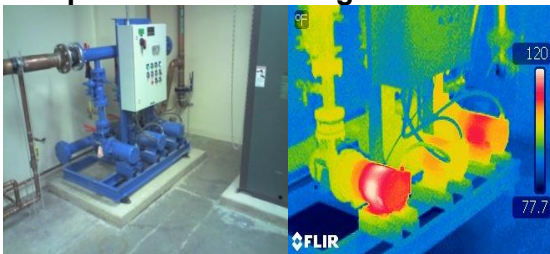
The higher the object's temperature, the greater the IR radiation emitted. Infrared allows us to see what our eyes can not. Infrared Thermography cameras produce images of invisible infrared or "heat" radiation and provide precise non-contact temperature measurement capabilities. Nearly everything gets hot before it fails.

This is a picture of an insulated chilled water line. The dark black circles indicate a water leak, that could have been a breach in the glass rock insulation or a leak in the pipe. **BCH** will market the use of the camera in the testing and commissioning stage to scan pipe insulation, drywall, pipe joint integrity, ductwork air leakages, and much more. We can also use this camera on LEED projects to determine air infiltration and inadequate insulation.

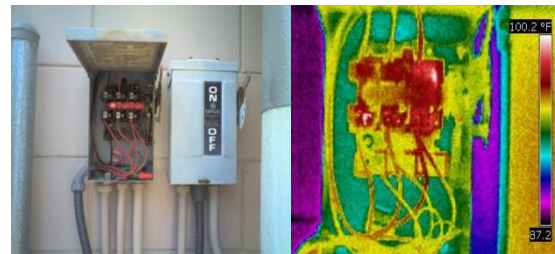


ConServ can use this camera during annual chiller inspections to do predictive maintenance. This will show us what electrical components are failing that the naked eye cannot see. We can also provide service to identify potential problems on building electrical panels, switch gears, disconnects, motor starters, motors, pumps, drives, and so much more. Here are a few samples:

Pump Motor Overheating



Disconnect: Forks and connections overheating



To see this article and other articles, please visit www.bchmechanical.com/etips.php

Please visit our website www.bchmechanical.com or contact one of the persons below for addition information.

Daryl Blume, President, darylblume@bchmechanical.com
Jeff Nichols, Chief Estimator, jeffnichols@bchmechanical.com
Gary Gatley, Plumbing Supervisor, garygatley@bchmechanical.com
Mark Williams, Sales Associate, markwilliams@bchmechanical.com
Brian Wilkinson, Sales Associate, brianwilkinson@bchmechanical.com